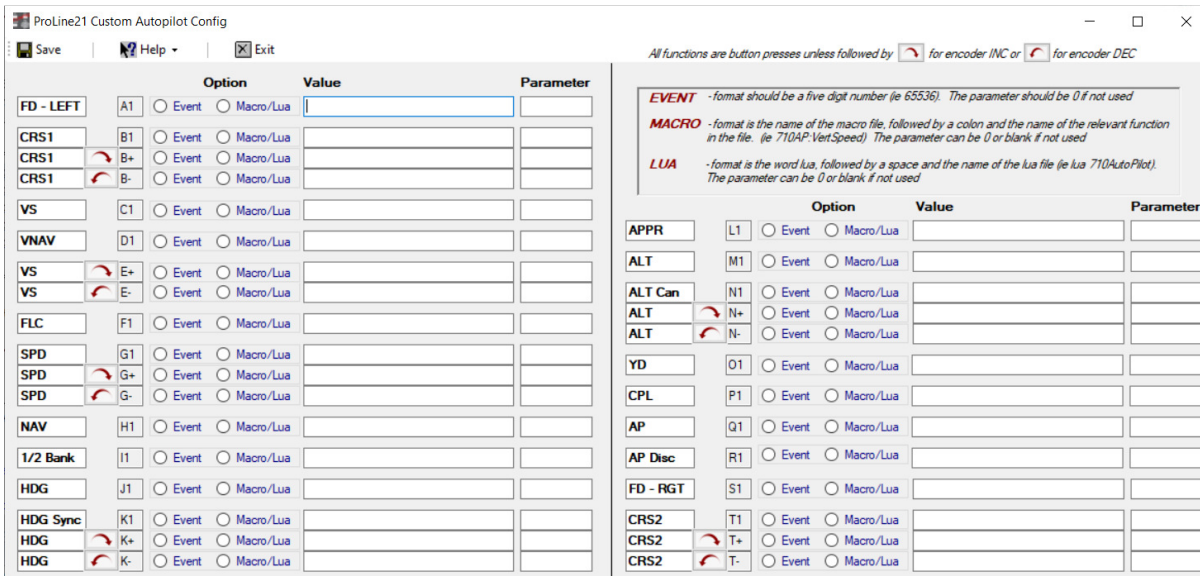


Ruscool ProLine21 Custom Autopilot Config

This software can be used if a custom aircraft does not use the standard FSUIPC offsets; instead utilising macros, lua scripts or FS events.

Run the 'Ruscool ProLine21 Custom Autopilot Config' and the below screen will appear



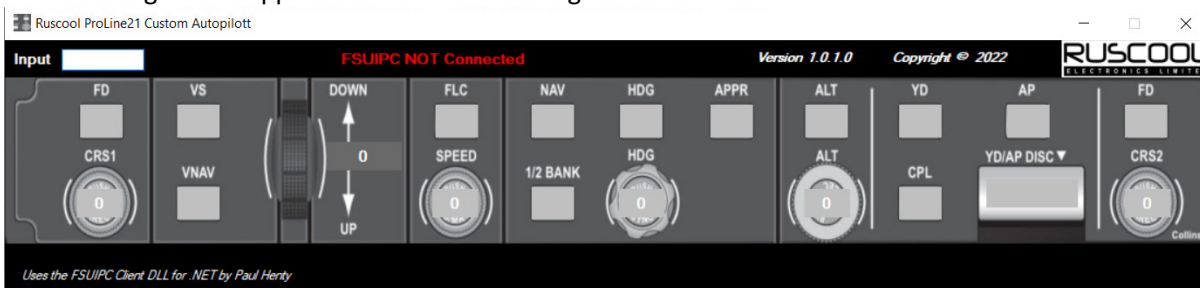
For each function, select the relevant option – Event or Macro/Lua and follow the notes on the top left of the screen for relevant formatting

Once all required functions have been entered, click on Save

Ruscool ProLine21 Custom Autopilot

This software can be used once the configuration software has been completed. If the panel is being tested and there is no current connection to the Flight Simulator software, the configuration can be left blank at this stage.

The following screen appears with a note showing whether FSUIPC is connected or not.



Any interaction with the panel while there is no FSUIPC connection will show the buttons turn green and the encoder numbers counting up and down.

Once there is a connection to FSUIPC, this program can remain minimised on the taskbar and it will interact directory with the simulator as per the configuration.