

Ruscool Proline21 Autopilot

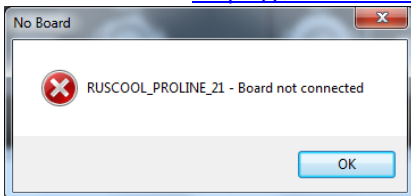
This software can be used for standalone testing of the Ruscool Proline21 Autopilot, or for communication between the Proline21 panel and FSUIPC within Flight Simulator.

Start the software it will appear minimised on the taskbar. Click on the taskbar icon and the below screen will be shown.



This message will pop-up if the Ruscool Proline21 Autopilot connection cannot be found.

- Check the USB connection between the autopilot and the computer.
- If Device Manager shows an error, you may need to manually install the driver from the below address <https://www.silabs.com/products/development-tools/software/usb-to-uart-bridge-vcp-drivers>



When a button on the Ruscool Proline21 Autopilot is pressed, the software will display the value coming from the panel in the 'Input' box (eg A1, B64, etc) This is the value that identifies which button is being pressed.



The corresponding button will highlight green when it is 'ON' and revert to gray when it is 'OFF' Encoder buttons show green when 'ON' and gray when 'OFF' and as the encoder is moved, the value on the screen will increment/decrement accordingly.

If FSUIPC is running, the corresponding offset values are sent to Flight Simulator which will control the simulator.

Function	Offset No.	Function	Offset No.
FD	2EE0	HDG	07C8
CRS1	0C4E	HDG encoder	07CC
VS	07EC	APPR	0800
VS encoder	07F2	ALT	07D0
SPD	07DC	ALT encoder	07D4
SPD encoder	07E2	YD	0808
NAV	07C4	AP	07BC
½ Bank	6700	CRS2	05C5